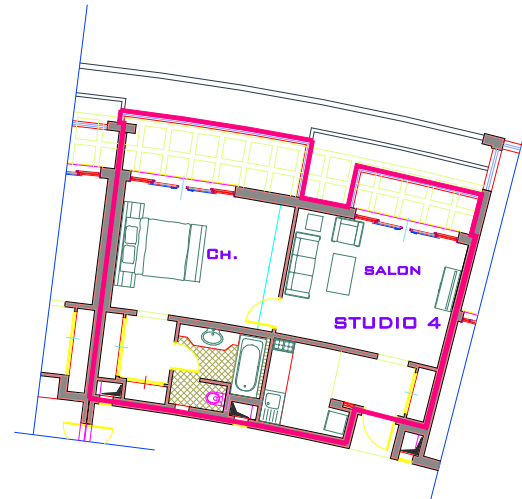
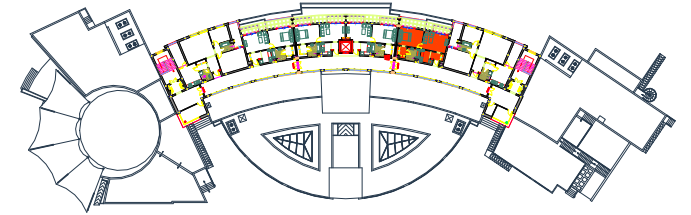


Société de Promotion Immobilière Pour la Vente et la Location
PROJET DE CONSTRUCTION D'UN CENTRE DE VIE - MGHIRA III



LOCAL 32

Niveau:	3ème Etage
Surface Utile:	53.60 m²
Surface Hors oeuvre :	76.64 m²
Surface Commune:	50.72 m²
Surface Vendable:	127.36 m²

